

PLATO[®] Fastrack Curriculum Placement Test

Grade Level: 2–14
Target Audience: Middle/High School/Adult
Audio Support: No

Product Features

- Provides a series of skill-level placement tests in mathematics, reading, and language arts
- Addresses skill levels from grades 2–14 depending on the curriculum
- Adjusts the test duration depending on the learner's skill level
- Allows instructors to enter a starting skill level to minimize test time
- Places learners at the appropriate skill level, exempting them from modules where objectives have been mastered
- Allows learners to stop and bookmark a test to resume later
- Available in PLATO[®] Pathways and the PLATO[®] Web Learning Network management systems

Product Benefits

- Determines the skills of learners in specific subject areas
- Establishes a starting skill level and places students within the curriculum
- Generates a customized learning path that identifies the skills needed to be mastered
- Allows learners to move through curriculum at their own pace
- Reports a grade level based on a criterion referenced test
- Teacher reports indicate learner progress and achievement gains
- Tracks student progress and directs learning with easy-to-read bookmark symbols and graphics that indicate a module is mastered or not mastered

Online Tools (PLATO[®] Fastrack Advantage Math and Language Arts)

Glossary—provides definition of terms essential to understanding the activity

Calculator—provides tool for basic math operations and calculations

Menu Icons

Hint—provides clue to help determine answers

Data—displays information relative to the activity

Help—provides explanation of menu icons and key strokes in the activity

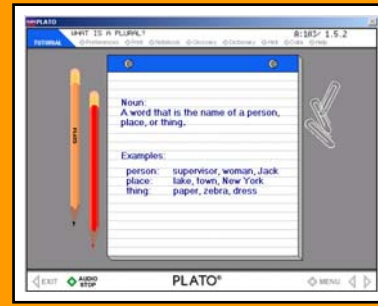
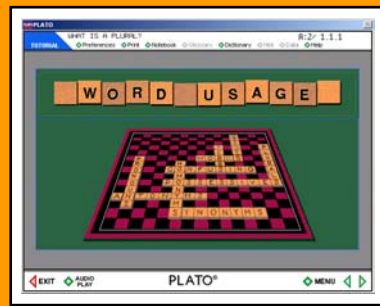
Right green arrow—moves forward to the next screen

Left green arrow—moves backward to previous screen

Left red arrow—allows learner to stop and exit the activity

Reference Materials (Refer to PLATO[®] Documentation CD)

PLATO[®] User Guides—PLATO Assessments (Fastrack)



Getting Started

- Review the PLATO Fastrack scope and sequence in the PLATO Fastrack user guide.
- Make sure PLATO® curriculum is installed before using PLATO Fastrack Assessments.
- Assign the appropriate PLATO Fastrack Curriculum Placement Test to the learner in one of the following curriculum areas: Reading, Language Arts, or Math.
- Allow the learner to complete the assessment.
- Set test expectations and time limits.

Test Progression

- Learners begin PLATO Fastrack Curriculum Placement Tests by starting at a skill level determined by their teacher. Note: Learners can determine skill level if necessary when working independently of the teacher.
- Upon completion, the system generates an individual learning path based on the learner's performance.
- Learners complete the prescribed PLATO® courseware modules determined by their individual learning path.

Assessment

- PLATO Fastrack Curriculum Placement Tests are to be used only to place learners within the PLATO curriculum.
- Use mastery tests within PLATO curriculum to assess learner mastery of specific skills and identify skills gaps.
- Use a state or local assessment as a summative evaluation to measure academic achievement.

Implementation Strategies

- Place targeted learners into PLATO curriculum that addresses prerequisite skills.
- Provide advanced learners with more challenging opportunities within PLATO curriculum.
- Use PLATO Fastrack as a pre-GED preparation tool starting at skill level G.
- Place adult learners within PLATO curriculum for review and reinforcement of skills.

Evaluation

- Review prescribed learning paths with learners and develop a plan to address identified academic needs.
- Monitor and measure learner progress by generating PLATO Fastrack reports.
- Discuss report data with learner to determine the next steps.

Extension Exercises

- Use the course level assessments when appropriate.
- As a post test strategy, reassign the same PLATO Fastrack Curriculum Placement Test to compare skill or grade-level gains.

For more information, please call 800.44.PLATO or visit www.plato.com.

Real learning. Real results.™